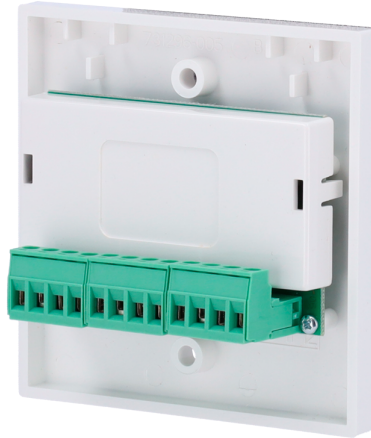


Fire and Evacuation / Advanced / Modules

# ADV-20-VMMC100

ADVANCED



## Features

---

- Advanced
- Module of 1 supervised output
- Loop powered
- Short circuit isolators on each device according to the requirements of EN54-17,EN54-18
- Ability to address automatically (via control panel) or manually via a portable programmer
- Two-way digital testing

## Specifications

---

<b>Brand</b>	Advanced
<b>Voltage DC</b>	Nominal Relay Switching current 24V (15~40V)
<b>Average consumption</b>	120mA
<b>LED Consumption (Max.)</b>	6mA@24VDC
<b>Accepted plug in</b>	Accepted plug in up to 2.5mm <sup>2</sup>
<b>End-of-line resistor (REOL)</b>	27Kohm
<b>Relay Nominal Switching Current</b>	30VDC / 2A max.
<b>Operating temperature range</b>	-30°C ~ +70°C
<b>Humidity (non condensing)</b>	95% RH
<b>Dimensions</b>	85 x 85 x 30 mm (H x W x D)
<b>Weight</b>	180g
<b>IP protection</b>	IP21C
<b>Certification</b>	EN 54-17,EN54-18