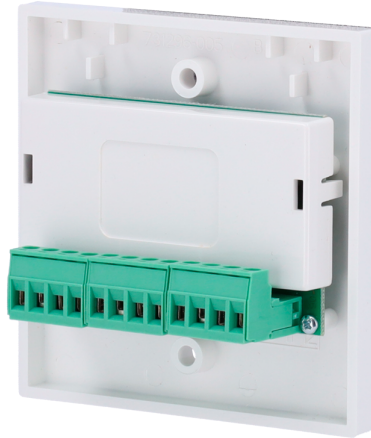


Fire and Evacuation / Advanced / Modules

ADV-20-VMMC120

ADVANCED



Features

- Advanced
- 1 relay output
- Loop powered
- Short circuit isolators on each device according to the requirements of EN54-17,EN54-18
- Ability to address automatically (via control panel) or manually via a portable programmer
- Two-way digital testing

Specifications

| | |
|--|--|
| Brand | Advanced |
| Voltage DC | Nominal Relay Switching current 24V (15~40V) |
| Average consumption | 120mA |
| LED Consumption (Max.) | 6mA@24VDC |
| Accepted plug in | Accepted plug in up to 2.5mm ² |
| Relay Nominal Switching Current | 30VDC / 2A max. |
| Operating temperature range | -30°C ~ +70°C |
| Humidity (non condensing) | 95% RH |
| Dimensions | 52 x 75 x 28 mm (H x W x D) |
| Weight | 180g |
| IP protection | IP21C |
| Certification | EN 54-17,EN54-18 |