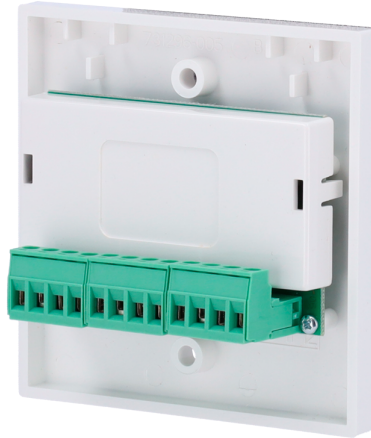


ADV-20-VMMIC120

ADVANCED



Features

- Advanced
- 1 input and 1 relay output
- Loop powered
- Short circuit isolators on each device according to the requirements of EN54-17,EN54-18
- Ability to address automatically (via control panel) or manually via a portable programmer
- Two-way digital testing

Specifications

Brand	Advanced
Voltage DC	Nominal Relay Switching current 24V (15~40V)
Average consumption	120mA
LED Consumption (Max.)	6mA@24VDC
Accepted plug in	Accepted plug in up to 2.5mm ²
End-of-line resistor (REOL)	27Kohm
Alarm resistor (Rw)	10Kohm
Relay Nominal Switching Current	30VDC / 2A max.
Operating temperature range	-30°C ~ +70°C
Humidity (non condensing)	95% RH
Dimensions	52 x 75 x 28 mm (H x W x D)
Weight	180g
IP protection	IP21C
Certification	EN 54-17,EN54-18